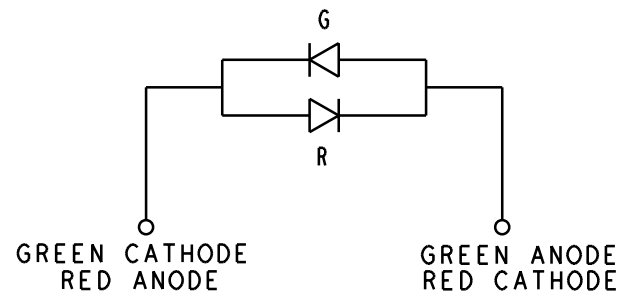
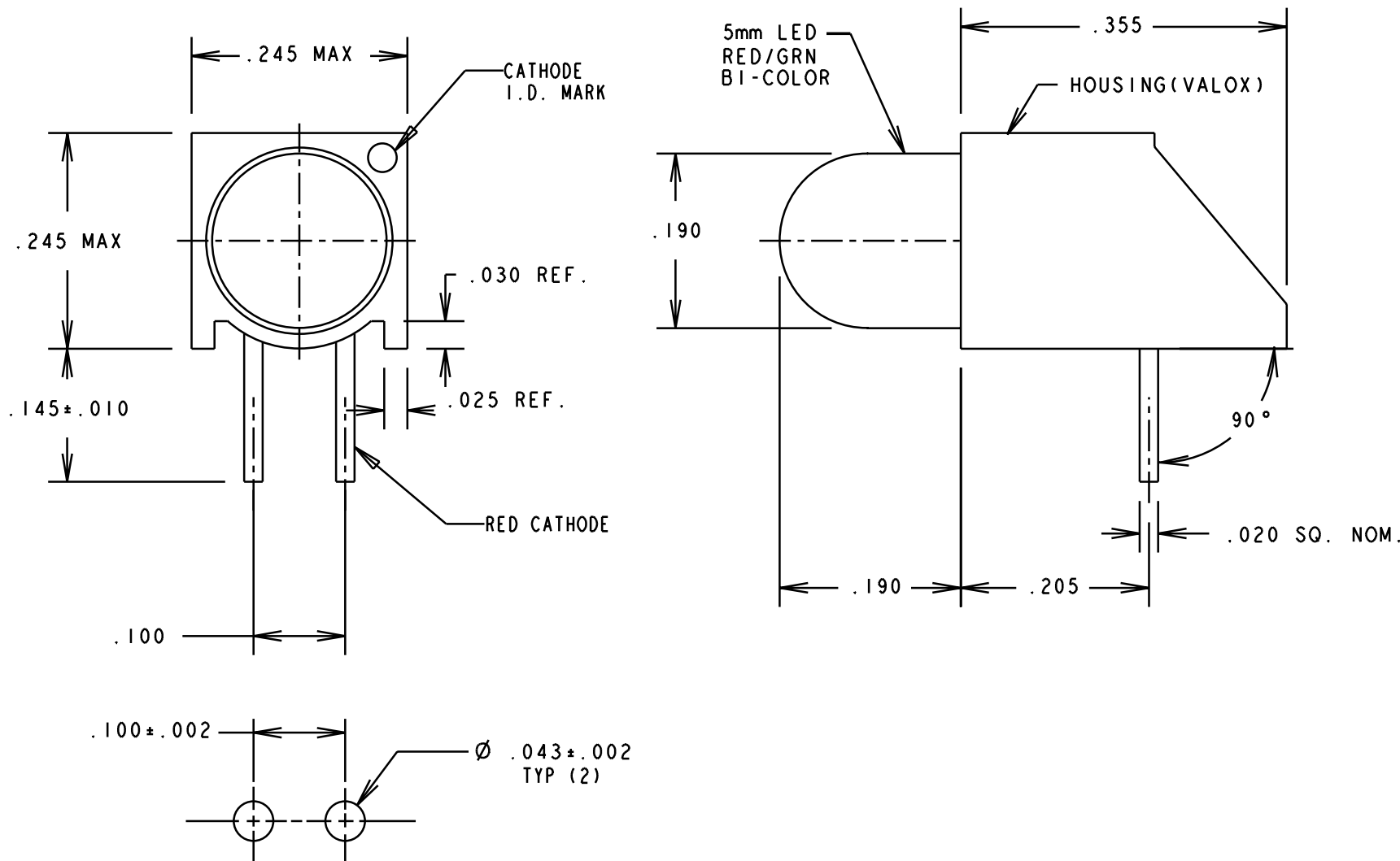


OPERATING CHARACTERISTICS AT T_A = 25 C °
RED/GREEN BI-COLOR L.E.D.

REV.	ECN NO.	REVISIONS	DRN.	CKD.	APP.	DATE
A	—	NEW RELEASE	DC			



SYMBOL	PARAMETER	COLOR	MIN	TYP	MAX	UNITS	TEST COND.
I _F	FORWARD VOLTAGE	RED		2.3	3.0	V	I _F = 20 mA
		GREEN		2.3	3.0		
V _R	REVERSE VOLTAGE	RED	5			V	I _R = 100 μA
		GREEN					
λ _{PK}	PEAK WAVELENGTH	RED		650		nm	MEASURED AT PEAK
		GREEN		568			
I _V	LUMINOUS INTENSITY	RED	2.0	6.0		mcd	I _F = 20 mA
		GREEN	2.0	6.0			
2 ∅ 1/2	VIEWING ANGLE	RED		100		deg	I _F = 20 mA
		GREEN					



RECOMMENDED P.C.B. HOLE PATTERN

NOTES:

- LEADS TO FIT INTO HOLES SPACED AS PER HOLE PATTERN.
- LED LEAD DIMENSIONS SHOWN ARE MEASURED AT HOUSING EXIT.
- DIALIGHT PART NO. 550-3006-806.

THIS DRAWING AND THE CONTENTS HEREIN ARE CONFIDENTIAL AND THE SOLE PROPERTY OF DIALIGHT. REPRODUCTION OF THIS DRAWING OR CONSTRUCTION OF ANY PARTS WITHIN THIS DRAWING ARE FORBIDDEN WITHOUT THE WRITTEN CONSENT OF DIALIGHT.		
SCALE 6:1	DRAWING NUMBER	REV
ALL DIM'S IN: INCHES	C-16548	A
TOLERANCES: UNLESS OTHERWISE SPECIFIED	TITLE RED/GREEN BI-COLOR CBI WITH STANDOFF	
FRACTIONS: ±1/64	MATERIAL	
DECIMALS (.XX): ±.020	Dialight	
DECIMALS (.XXX): ±.015	1913 ATLANTIC AVE. MANASQUAN, N.J. 08736	
ANGLES: ±3°	FSCM 83330	
FINISH:	SHEET OF	FAMILY TABLE: