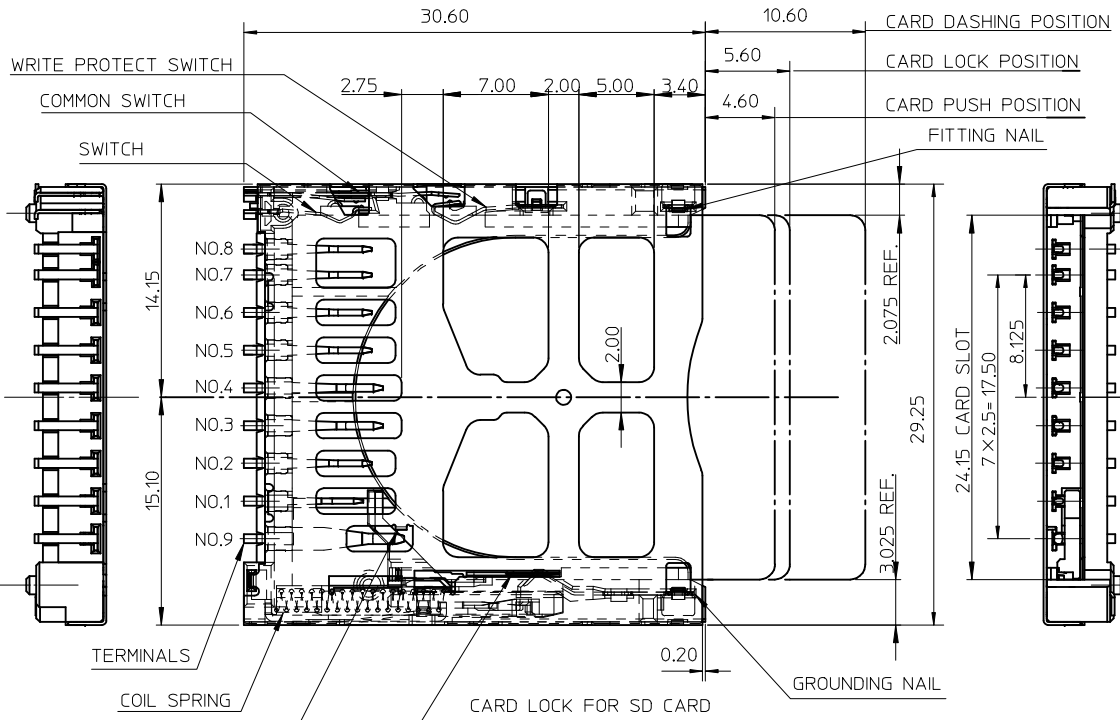
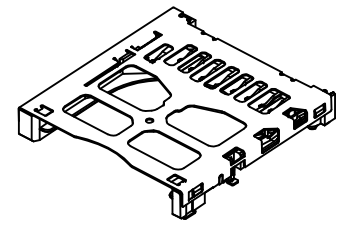
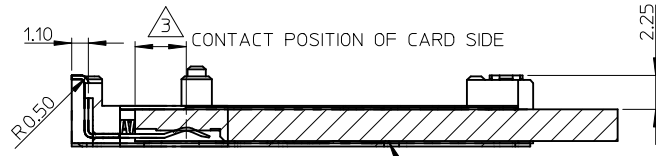
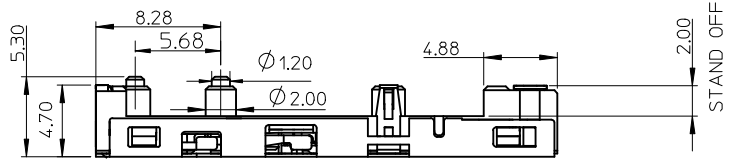


10 9 8 7 6 5 4 3 2 1



NOTES:  
 1.HOUSING: HIGH TEMPERATURE THERMOPLASTIC, GLASS FIBER FILLED,UL94V-0. COLOR: BLACK  
 TERMINAL: COPPER ALLOY, SELECTIVE Au PLATING  
 METEL SHELL: STAINLESS STEEL  
 EACH SWITCHES: COPPER ALLOY, SELECTIVE Au PLATING.  
 EACH NAILS: COPPER ALLOY, SELECTIVE AU PLATING.  
 COIL SPRING: STEEL WIRE.  
 CAM PIN: STAINLESS STEEL  
 2.TERMINAL AND NAIL COPLANARITY TO BE 0.1MAX  
 3.CONTACT POSITION OF CARD SIDE

TERMINAL NO.	CONTACT POSITION
NO.1	2.4
NO.2,5,6,7,8	2.9
NO.3,4	3.4
NO.9	5.2

4.OPEN/CLOSE OF EACH SWITCH

	WRITE PROTECT SWITCH		SWITCH
	WRITE PROTECT POSITION	WRITE ENABLE POSITION	
CARD UNINSERTION	OPEN	OPEN	OPEN
CARD HALF INSERTION	CLOSE	CLOSE	OPEN
CARD INSERTION	OPEN	CLOSE	CLOSE

- 5.WHEN DELIVERING, THE PUSH/PUSH MECHANISM IS IN THE STATE OF THE UNLOCK.(CARD DASHING OUT POSITION)
- 6.CARD READ ONLY BY THE TIME THE CARD DETECTION.
- 7.I/O CONTACTS, BASE ON SD I/O ASSOC. REV.G.
- 8.PRODUCT SPECIFICATION: SEE TABLE
- 9.TERMINAL 1 TO BE SIGNAL DETECTING WHEN SD CARD INSERTING.
- 10.PRODUCT COMPLIANT TO RoHS DIRECTIVE 2002/95/EC AND ELV 2000/53/EC.

PART NO.	DESCRIPTION	PRODUCT SPECIFICATION	REMARK
67955-8001	STANDARD	PS-67913-003	FOR SD ONLY
67955-8002	STADARD W/O CARD LOCK PIN		SD/MMC

UPDATE DRAWING  
 EC NO: SH2009-0154  
 DRWN:LSONG 2008/09/18  
 CHKD:XJ.SONG 2008/09/18  
 APPR:HMWANG 2008/10/23

QUALITY SYMBOLS  
 ▽=0  
 ▽=0  
 GENERAL TOLERANCES (UNLESS SPECIFIED)  
 4 PLACES ± --- ± ---  
 3 PLACES ± --- ± ---  
 2 PLACES ± 0.25 ± ---  
 1 PLACE ± 0.25 ± ---  
 ANGULAR ± 3 °  
 DRAFT WHERE APPLICABLE MUST REMAIN WITHIN DIMENSIONS

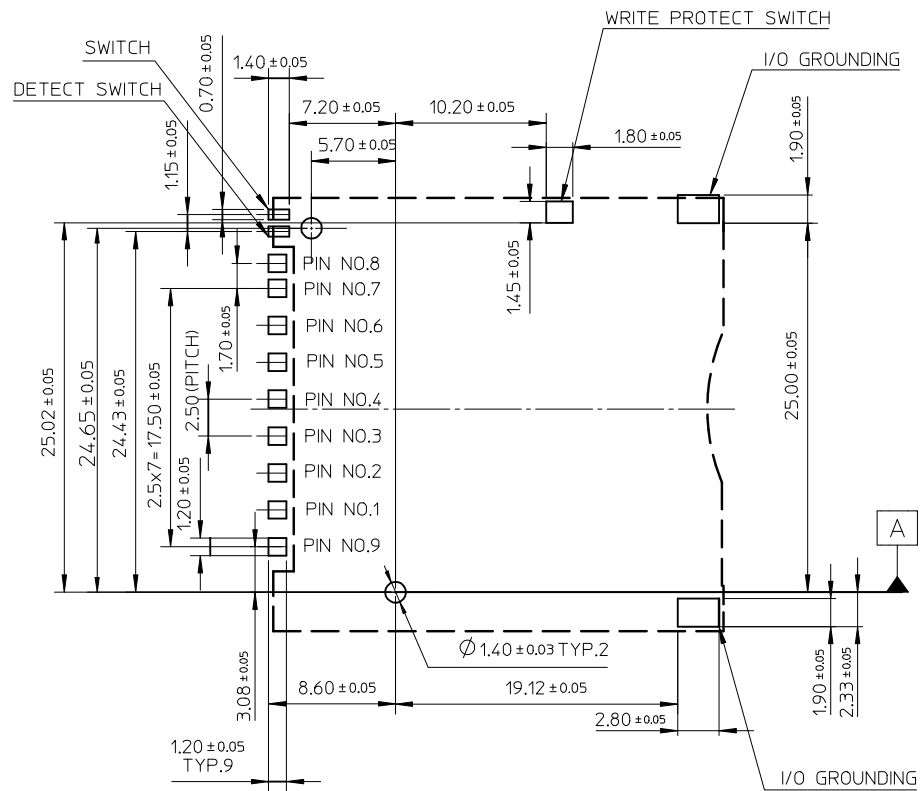
DIMENSION STYLE  
**MM ONLY**  
 DRAWN BY: QLZHANG  
 CHECKED BY: HARVEY  
 APPROVED BY: VINCENT  
 DATE: 2005/04/06  
 DATE: 2005/04/06  
 DATE: 2005/04/06

SCALE: 3:1  
 DESIGN UNITS: METRIC  
 THIRD ANGLE PROJECTION  
 TITLE: SD/I/O CARD CONN.STAND OFF 2.0 MM(LEAD-FREE, PUSH-PUSH & REVERSE)  
 MOLEX MOLEX INCORPORATED  
 MATERIAL NO. SEE TABLE  
 DOCUMENT NO. SD-67955-003  
 SHEET NO. 1 OF 3  
 THIS DRAWING CONTAINS INFORMATION THAT IS PROPRIETARY TO MOLEX INCORPORATED AND SHOULD NOT BE USED WITHOUT WRITTEN PERMISSION

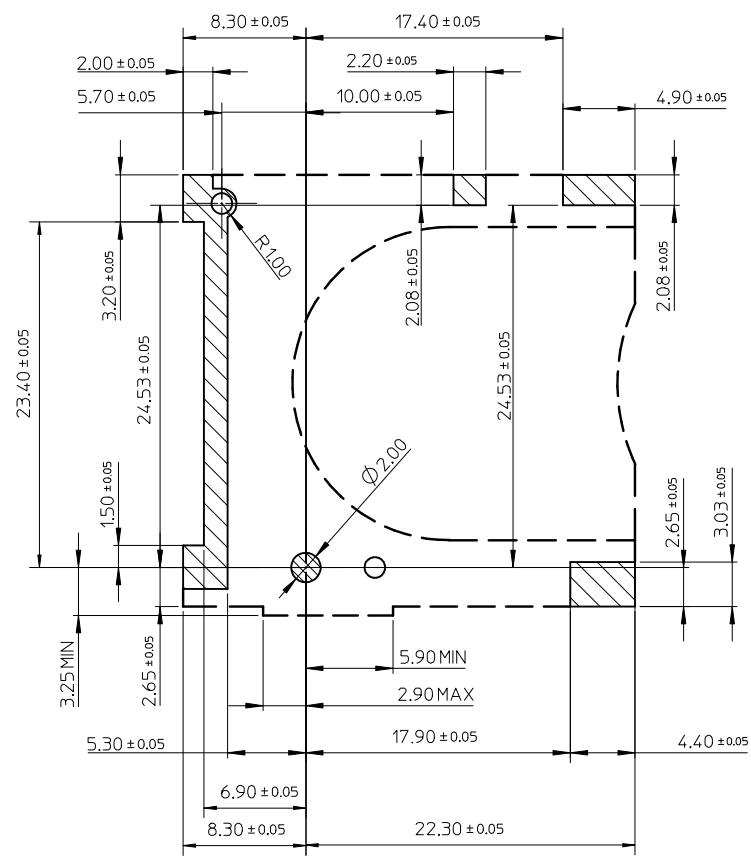
9 8 7 6 5 4 3 2 1

10 9 8 7 6 5 4 3 2 1

F  
E  
D  
C  
B  
A



RECOMMENDED PCB PATTERN LAYOUT

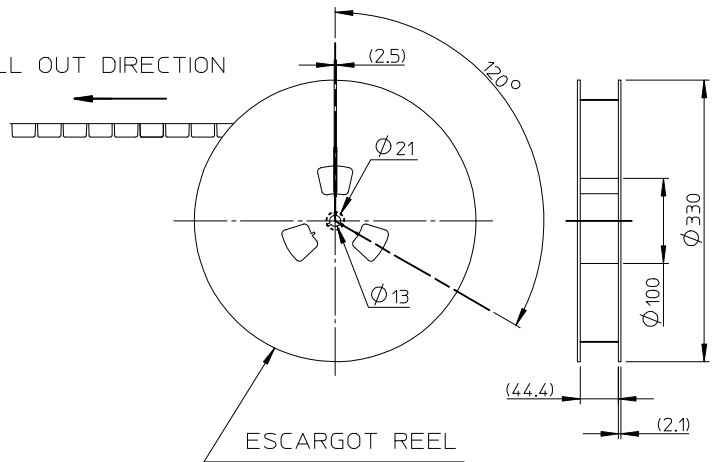


STAND OFF AREA FOR PATTERN PROHIBITION

SEE SHEET 1 EC NO: SH2009-0154 DRAWN: SONG9 CHKD: XJSONG APPR: HWANG	DESCRIPTION REV	QUALITY SYMBOLS ▽=0 ◻=0	GENERAL TOLERANCES (UNLESS SPECIFIED)	DIMENSION STYLE MM ONLY	SCALE 3:1	DESIGN UNITS METRIC	THIRD ANGLE PROJECTION	
			mm    INCH	DRAWN BY    DATE QLZHANG    2005/04/06	TITLE SD/IO CARD CONN.STAND OFF 2.0 MM(LEAD-FREE, PUSH-PUSH & REVERSE)			
			4 PLACES ± --- ± --- 3 PLACES ± --- ± --- 2 PLACES ± 0.25 ± --- 1 PLACE ± 0.25 ± ---	APPROVED BY    DATE VINCENT    2005/04/06	MOLEX INCORPORATED			
			ANGULAR ± 3 °	MATERIAL NO.	DOCUMENT NO.	SHEET NO.		
		DRAFT WHERE APPLICABLE MUST REMAIN WITHIN DIMENSIONS	SIZE A3	SEE SHEET 1	SD-67955-003	THIS DRAWING CONTAINS INFORMATION THAT IS PROPRIETARY TO MOLEX INCORPORATED AND SHOULD NOT BE USED WITHOUT WRITTEN PERMISSION		

9 8 7 6 5 4 3 2 1

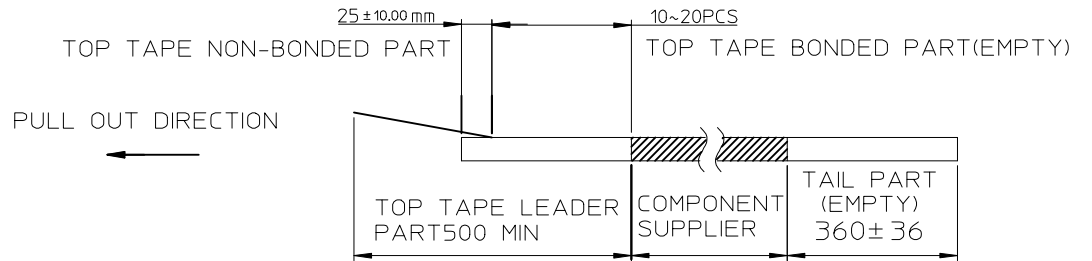
PULL OUT DIRECTION



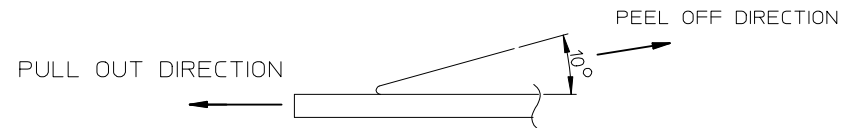
ESCARGOT REEL

NOTES

1. NUMBER OF CONNECTORS: 250 PCS/REEL
- 2.

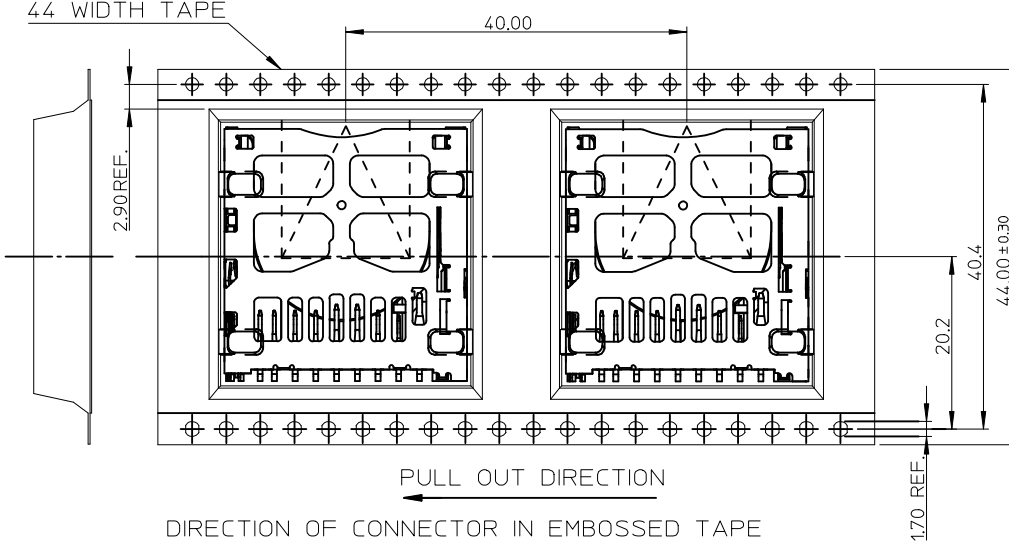


3. PEEL OFF FORCE OF TOP TAPE: 0.1~1.3 N (10.2~130gf)  
PEELING DIRECTION AS SHOWN IN FOLLOWING FIG.)  
(PEEL OFF SPEED: 300mm/min.REF.)



4. PACKAGING DRAWING REFERS TO PK-67955-001.

44 WIDTH TAPE



SEE SHEET 1  
EC NO: SH2009-0154 2008/09/18  
DRAWN: SONG09  
CHKD: XJ SONG 2008/09/18  
APPR: HWANG 2008/10/23

REV	DESCRIPTION
1	QUALITY SYMBOLS
2	QUALITY SYMBOLS

GENERAL TOLERANCES (UNLESS SPECIFIED)	
	mm
4 PLACES	± 0.15
3 PLACES	± 0.20
2 PLACES	± 0.25
1 PLACE	± 0.30
ANGULAR ± 3°	
DRAFT WHERE APPLICABLE MUST REMAIN WITHIN DIMENSIONS	

DIMENSION STYLE	
MM ONLY	
DRAWN BY	DATE
QLZHANG	2005/04/06
CHECKED BY	DATE
HARVEY	2005/04/06
APPROVED BY	DATE
VINCENT	2005/04/06
MATERIAL NO.	
SEE SHEET 1	

SCALE	DESIGN UNITS	THIRD ANGLE PROJECTION
1:1	METRIC	
TITLE		
SD/IO CARD CONN.STAND OFF 2.0 MM(LEAD-FREE, PUSH-PUSH & REVERSE)		
MOLEX INCORPORATED		
DOCUMENT NO.		SHEET NO.
SD-67955-003		3 OF 3

THIS DRAWING CONTAINS INFORMATION THAT IS PROPRIETARY TO MOLEX INCORPORATED AND SHOULD NOT BE USED WITHOUT WRITTEN PERMISSION